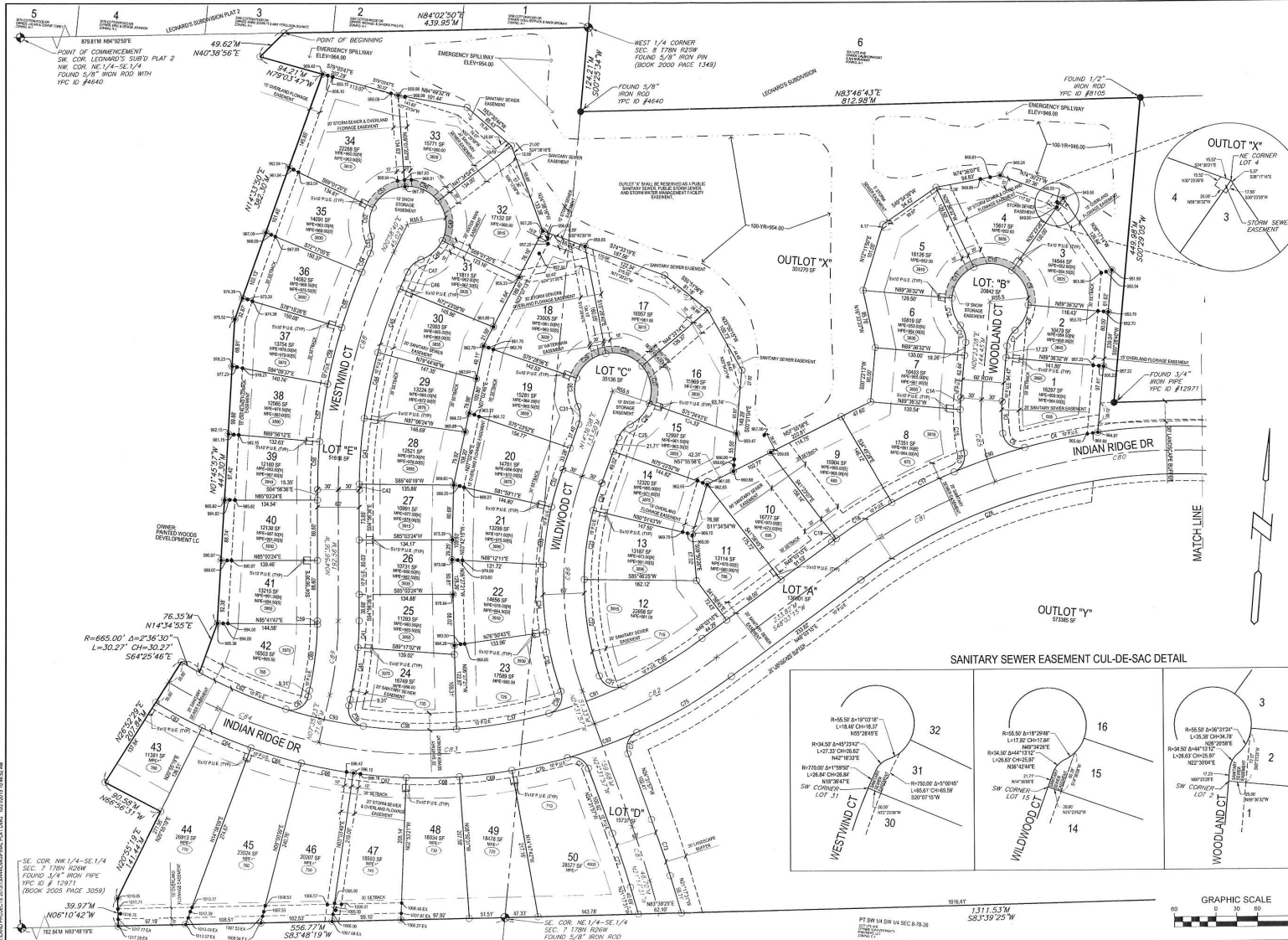


Painted Woods West | Waukee, Iowa Plat 1

Lot #	Address	Sq. Ft.	Configuration	GOR/GOL	Price	Status
37	3870 Westwind Ct	13,754	Standard	TBD	\$89,900	Sold
38	3890 Westwind Ct	12,565	Standard	TBD		Spec-Crystal

Painted Woods West | Waukee, Iowa Plat 1



Bishop Engineering
 Planning Your Successful Development
 3501 101st Ave SE, Suite 200
 Des Moines, IA 50325
 Phone: (515) 281-4444 Fax: (515) 281-4337
 Civil Engineering & Land Surveying Established 1999

PAINTED WOODS WEST PLAT 1
 WAUKEE, IOWA

FINAL PLAT

REFERENCE NUMBER: 020544
 040331

DRAWN BY: JMR

CHECKED BY: LSH

REVISION DATE: 9/22/15
 020815

PROJECT NUMBER:
130444

SHEET NUMBER:
2 OF 3



KRM Development does not guarantee the information describing these properties. Interested parties are advised to independently verify this information through personal inspection or with appropriate professionals. Prices are subject to change without notice.

Revised 1.2024