

# Heritage At Grimes | Grimes, Iowa Plat 7

Lot #	Address	Sq. Ft.	Configuration	GOR/GOL	Price	Status
1	1004 NE 22nd St	11,495	Walkout			Sold
2	1008 NE 22nd St	11,495	Walkout			Sold
4	1104 NE 22nd St	11,074	Walkout			Sold
10	1212 NE 22nd St	14,505	Walkout			Sold
19	1009 NE 22nd St	11,847	Standard			Sold
20	1005 NE 22nd St	11,847	Standard	GOR		Sold
21	1004 NE 23rd St	13,102	Walkout			Sold
22	1008 NE 23rd St	11,866	Walkout			Sold
23	1100 NE 23rd St	12,178	Walkout			Sold
24	1104 NE 23rd St	12,178	Walkout			Sold
25	1108 NE 23rd St	12,178	Walkout			Sold

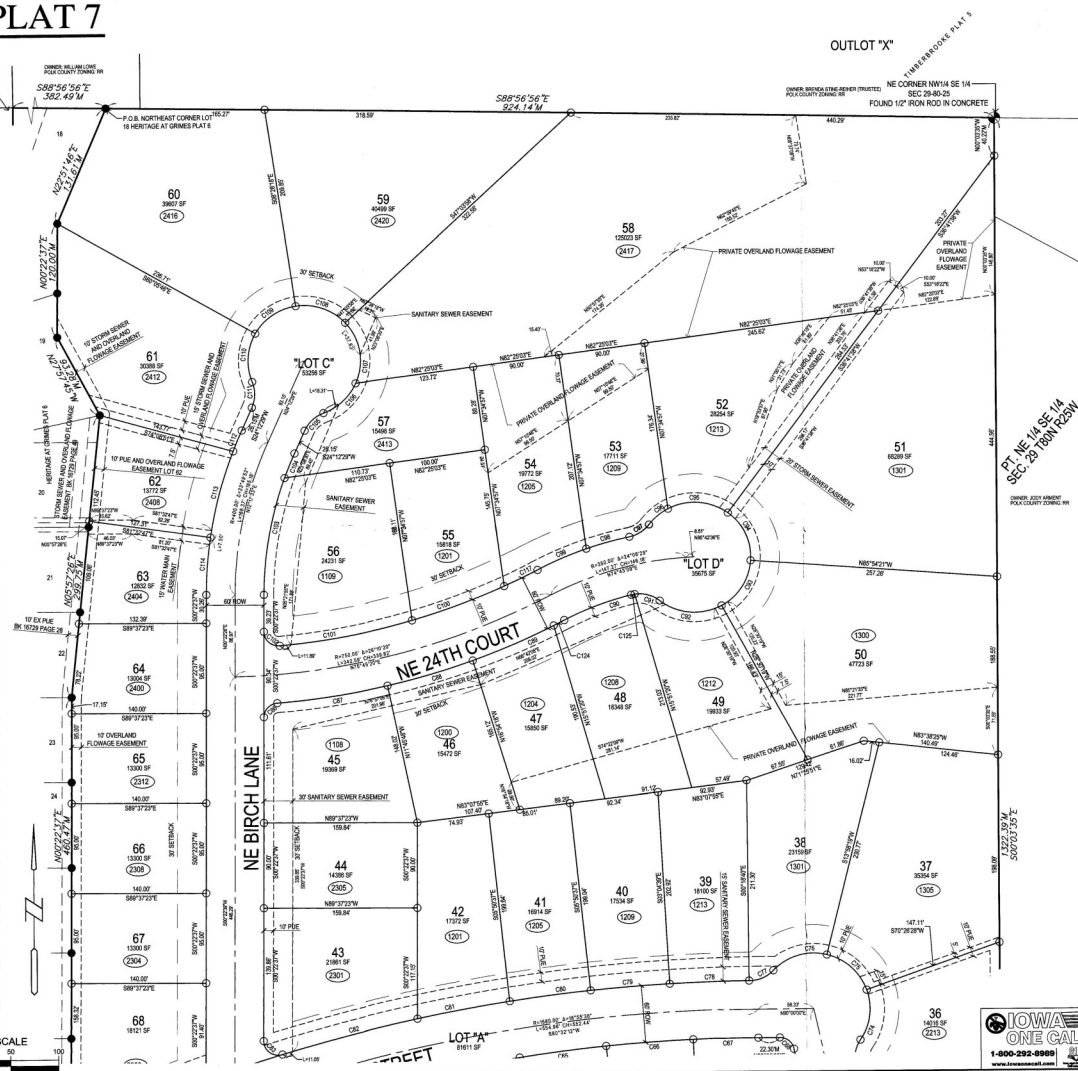
# Heritage At Grimes | Grimes, Iowa Plat 7

Lot #	Address	Sq. Ft.	Configuration	GOR/GOL	Price	Status
28	1208 NE 23rd St	12,178	Walkout			Sold
29	1212 NE 23rd St	15,519	Walkout			Sold
38	1301 NE 23rd St	23,159	Walkout/ Backs to Trees			Sold
43	2301 NE Birch Ln	21,861	Standard			Sold
46	1200 NE 24th Ct	15,472	Standard			Sold
47	1204 NE 24th Ct	15,850	Standard			Sold
48	1208 NE 24th Ct	18,348	Walkout			Sold
49	1212 NE 24th Ct	19,933	Walkout			Sold
52	1213 NE 24th Ct	28,754	Walkout			Sold
54	1205 NE 24th Ct	19,772	Walkout			Sold
60	2416 NE Birch Ln	39,607	Walkout			Sold

# Heritage At Grimes | Grimes, Iowa Plat 7

## HERITAGE AT GRIMES PLAT 7 FINAL PLAT

CURVE TABLE			
CURVE	LENGTH	RADIUS	CHORD BEARING DELTA
C1	76.14	1170.00	88.83 S89°11'20"W 3°43'42"
C2	88.67	836.00	88.83 S71°43'30"W 8°11'20"
C3	19.67	687.80	19.67 N87°11'07"E 1°36'50"
C4	27.40	482.15	27.38 N82°48'01"E 3°11'22"
C5	57.82	390.21	57.86 N75°25'21"E 3°39'27"
C6	88.67	836.00	88.83 N62°43'30"W 8°11'20"
C7	88.67	836.00	88.83 N47°43'30"W 8°11'20"
C8	88.67	836.00	88.83 N32°43'30"W 8°11'20"
C9	59.94	1170.00	59.93 N07°48'38"E 2°45'50"
C10	76.14	1170.00	76.12 N1°10'17"E 3°43'42"
C11	76.14	1170.00	76.12 N04°44'02"E 3°43'42"
C12	76.14	1170.00	76.12 N07°27'42"E 3°43'42"
C13	76.14	1170.00	76.12 N08°11'20"E 3°43'42"
C14	76.14	1170.00	76.12 N08°55'07"E 3°43'42"
C15	49.27	1170.00	49.27 S88°33'02"E 2°49'21"
C16	22.62	16.80	22.62 N44°02'00"W 6°10'59"
C17	50.88	1310.00	50.88 S75°23'20"W 2°13'01"
C18	85.25	1310.00	85.23 S68°58'59"W 3°43'43"
C19	85.25	1310.00	85.23 S62°11'23"W 3°43'43"
C20	85.25	1310.00	85.23 S78°27'42"E 3°43'43"
C21	85.25	1310.00	85.23 S74°44'00"W 3°43'43"
C22	85.25	1310.00	85.23 S71°00'17"W 3°43'43"
C23	88.68	1310.00	88.65 S67°48'58"W 2°54'50"
C24	74.55	690.00	74.51 N07°33'35"E 6°11'20"
C25	74.55	690.00	74.51 N09°40'07"E 6°11'20"
C26	54.88	690.00	54.86 N02°55'21"E 4°32'20"
C27	85.25	630.00	85.11 N08°10'22"E 4°32'20"
C28	85.25	630.00	85.11 N01°23'35"E 4°32'20"
C29	91.00	630.00	91.00 N06°38'18"E 4°49'36"
C30	87.62	1370.00	87.61 S67°38'22"W 2°48'40"
C31	76.00	1370.00	76.08 S75°38'38"W 3°10'51"
C32	76.00	1370.00	76.08 S73°48'39"W 3°10'51"
C33	76.00	1370.00	76.08 S70°03'19"W 3°10'51"
C34	76.00	1370.00	76.08 S67°11'29"W 3°10'51"
C35	76.00	1370.00	76.08 S64'22'29"W 3°10'51"
C36	76.00	1370.00	76.08 S61'33'29"W 3°10'51"
C37	44.31	1310.00	44.30 S89°42'20"W 1°51'11"
C38	23.58	18.90	23.17 N48°36'45"E 8°48'51"
C39	70.41	870.00	70.48 S05°51'44"E 4°08'40"
C40	81.86	1810.00	81.88 N08°48'09"W 2°11'58"
C41	83.87	1810.00	83.86 S88°32'21"W 3°10'51"
C42	83.83	1810.00	83.82 S87°04'14"W 3°08'10"
C43	83.87	1810.00	83.86 S85'22'59"W 3°10'51"
C44	83.83	1810.00	83.82 S82°54'59"W 3°08'10"
C45	83.87	1810.00	83.86 S80'12'29"W 3°10'51"
C46	83.83	1810.00	83.82 S77'40'14"W 3°08'10"
C47	83.87	1810.00	83.86 S75'07'59"W 3°10'51"
C48	83.83	1810.00	83.82 S72'35'44"W 3°08'10"
C49	83.87	1810.00	83.86 S70'03'29"W 3°10'51"
C50	83.83	1810.00	83.82 S67'31'14"W 3°08'10"
C51	83.87	1810.00	83.86 S64'58'59"W 3°10'51"
C52	83.83	1810.00	83.82 S62'26'44"W 3°08'10"
C53	74.53	1810.00	74.52 S59'54'29"W 2°48'40"
C54	83.78	1810.00	83.78 S57'22'14"W 2°50'20"
C55	74.53	1810.00	74.56 N07°02'35"W 6°10'51"
C56	109.13	1480.00	109.16 N04°45'47"E 4°28'02"
C57	48.65	480.00	48.63 S70°38'18"E 5°21'17"
C58	20.07	360.00	20.06 N70°02'22"E 3°17'50"
C59	13.27	200.00	13.27 N87°18'41"E 1°32'22"
C60	11.88	1600.00	11.88 S67°38'23"W 2°38'44"
C61	90.84	1600.00	90.83 S70°17'54"W 3°08'10"
C62	90.84	1600.00	90.83 S72°27'07"W 3°08'10"
C63	90.84	1600.00	90.83 S74'36'28"W 3°08'10"
C64	90.84	1600.00	90.83 S76'45'49"W 3°08'10"
C65	90.84	1600.00	90.83 S78'54'70"W 3°08'10"
C66	90.84	1600.00	90.83 S81'03'31"W 3°08'10"
C67	90.84	1600.00	90.83 S83'12'52"W 3°08'10"
C68	90.84	1600.00	90.83 S85'22'13"W 3°08'10"
C69	90.84	1600.00	90.83 S87'31'34"W 3°08'10"
C70	90.84	1600.00	90.83 S89'40'55"W 3°08'10"
C71	80.02	1000.00	80.00 N01°43'02"W 4°27'50"
C72	80.02	1000.00	80.00 N04'43'02"W 4°27'50"
C73	28.65	34.80	28.64 N07°38'50"W 44°18'24"
C74	54.88	58.50	52.96 N07°21'48"E 57°50'47"
C75	57.66	58.50	55.35 N47°47'37"W 50°28'07"
C76	81.34	58.50	87.37 S73°58'30"W 60°54'44"
C77	27.98	34.80	28.86 N08°18'47"E 40°48'17"
C78	82.84	1710.00	82.83 N09°18'17"E 4°49'59"
C79	82.84	1710.00	82.83 N07°32'27"E 2°45'50"
C80	82.84	1710.00	82.83 N05'46'37"E 3°48'52"
C81	87.67	1710.00	87.66 N07°40'19"E 3°16'22"
C82	145.25	1710.00	145.21 N70°38'04"E 4°58'09"
C83	28.07	15.00	24.15 S83°19'46"E 10°12'34"
C84	18.23	15.00	17.13 N13°13'07"E 69°37'50"
C85	112.86	1500.00	112.83 S88°37'33"E 1°08'01"
C86	23.33	15.00	20.33 S40°34'40"W 80°16'14"
C87	118.48	780.00	118.37 N81°58'17"E 1°30'21"
C88	92.00	780.00	92.00 N74°32'32"E 4°47'40"
C89	81.80	780.00	81.85 N07°52'15"E 6°40'21"
C90	74.00	330.00	74.03 S88°28'30"W 13°21'24"
C91	37.80	34.80	23.85 N24°41'27"W 48°08'40"
C92	86.30	58.50	84.49 S08°03'07"E 86°53'42"
C93	86.80	58.50	84.82 N12°44'03"E 87°23'51"
C94	86.81	58.50	84.83 N24°38'38"W 87°42'51"
C95	85.73	58.50	83.32 N88°29'22"W 64°22'20"
C96	26.15	58.50	25.89 S49°31'10"W 20°36'51"
C97	24.90	24.50	24.50 N07°19'15"E 41°02'42"
C98	46.63	370.00	46.63 S74°52'47"E 7°10'40"
C99	55.48	370.00	55.43 S68°30'11"W 8°21'50"
C100	102.88	730.00	102.87 N08°48'09"E 4°08'40"
C101	140.52	730.00	140.29 N70°39'19"E 11°10'59"
C102	24.95	15.00	22.17 S47°18'10"W 88°17'51"
C103	126.90	310.00	126.30 S10°31'31"W 19°28'48"
C104	27.96	370.00	27.96 S22°52'27"W 4°20'04"
C105	27.75	34.50	27.01 S47°18'10"W 48°08'40"
C106	46.82	58.50	45.58 N40°22'10"E 40°31'07"
C107	88.78	58.50	88.80 N09°44'19"E 17°22'29"
C108	86.71	80.50	86.53 N07°42'14"W 50°28'07"
C109	82.71	80.50	80.94 S04°54'24"W 81°37'30"
C110	82.87	80.50	81.08 S04°04'24"W 81°47'04"
C111	27.75	34.50	27.01 N01°18'09"E 48°10'18"
C112	23.85	430.00	23.85 S22°52'27"W 3°09'30"
C113	84.58	430.00	84.40 S14°40'18"W 12°38'12"
C114	80.61	430.00	80.56 S08°24'50"W 8°34'30"
C115	27.82	280.00	27.81 N88°18'15"E 5°27'28"
C116	18.88	480.00	18.88 N08°18'15"E 5°27'28"
C117	85.84	730.00	85.84 N04°52'15"E 2°04'02"
C118	12.48	80.00	12.48 N08°18'15"E 11°22'22"
C119	14.83	860.00	14.83 N08°18'15"E 11°22'22"
C120	7.07	490.00	7.07 N88°18'15"E 4°49'38"
C121	84.25	1710.00	84.24 S71°38'10"W 3°08'20"
C122	48.83	1510.00	48.83 S88°54'20"W 1°51'11"
C123	9.00	1030.00	9.00 N08°42'20"W 0°31'47"
C124	12.34	780.00	12.34 N89°18'15"E 8°54'22"
C125	3.74	34.50	3.74 S70°38'19"E 81°28'20"



LEGEND:  
 ○ PROPERTY CORNER - FOUND AS NOTED  
 ● PROPERTY CORNER - PLACED BY IRON PIPE WITH YELLOW PLASTIC CAP 6 IN DIA.  
 ○ SECTION CORNER - FOUND AS NOTED  
 ● SECTION CORNER - PLACED BY IRON PIPE WITH YELLOW PLASTIC CAP 6 IN DIA.  
 ALL SIZE AND SETBACKS ARE INTENDED TO BE USED TO LOCATE FROM THE PLAT. THE SUBJECT LOT AND ANY ADJACENTS.

**Bishop Engineering**  
 Planning, Surveying, Engineering & Construction  
 2000 1st Avenue, Des Moines, Iowa 50319-2623  
 Phone: (515) 281-4867 Fax: (515) 281-4217  
 Civil Engineering & Land Surveying Established 1959

HERITAGE AT GRIMES PLAT 7  
 GRIMES, POLK COUNTY, IOWA

FINAL PLAT

PROJECT NUMBER: 120101-17  
 SHEET NUMBER: 2 OF 3

DATE: 11/15/2018  
 1ST SUBMITTAL 6-1-2018  
 2ND SUBMITTAL 6-20-18

1-800-292-8989  
 www.bishopeng.com



KRM Development does not guarantee the information describing these properties. Interested parties are advised to independently verify this information through personal inspection or with appropriate professionals. Prices are subject to change without notice.

Revised 5.2024

# Heritage At Grimes | Grimes, Iowa Plat 7

## HERITAGE AT GRIMES PLAT 7 FINAL PLAT

CURVE TABLE				CURVE TABLE			
CURVE	LENGTH	RADIUS	CHORD	BEARING	DELTA	CURVE	LENGTH
C1	78.14	1170.00	78.12	S82°11'23"W	2°42'42"	C34	90.84
C2	88.87	830.00	89.03	S79°43'00"W	8°11'22"	C35	90.84
C3	19.87	897.86	19.87	N00°11'00"E	1°36'58"	C36	90.84
C4	27.40	492.15	27.28	N02°00'00"E	2°11'22"	C37	90.84
C5	47.82	352.21	47.98	N07°30'00"E	5°25'22"	C38	63.74
C6	89.87	830.00	89.63	N02°54'24"E	8°11'22"	C39	25.53
C7	89.87	830.00	89.63	N07°43'00"E	8°11'22"	C40	128.29
C8	89.87	830.00	89.63	N07°31'30"E	8°11'22"	C41	135.00
C9	59.54	1170.00	59.53	N02°40'00"E	2°54'36"	C42	80.02
C10	78.14	1170.00	78.12	N01°00'17"E	2°42'42"	C43	28.85
C11	78.14	1170.00	78.12	N04°40'00"E	2°42'42"	C44	54.68
C12	78.14	1170.00	78.12	N09°27'42"E	2°42'42"	C45	78.14
C13	78.14	1170.00	78.12	N02°11'00"E	2°42'42"	C46	81.34
C14	78.14	1170.00	78.12	N08°50'00"E	2°42'42"	C47	27.50
C15	43.27	1170.00	43.27	N08°53'20"E	2°29'51"	C48	82.56
C16	23.62	18.00	21.25	N44°50'20"W	80°13'00"	C49	82.56
C17	50.89	1310.00	50.89	S08°53'20"W	2°13'51"	C50	85.04
C18	85.25	1310.00	85.23	S08°50'00"W	2°42'42"	C51	97.87
C19	85.25	1310.00	85.23	N02°11'00"E	2°42'42"	C52	145.25
C20	85.25	1310.00	85.23	S79°37'42"W	2°42'42"	C53	28.07
C21	85.25	1310.00	85.23	S74°00'00"W	2°42'42"	C54	15.23
C22	85.25	1310.00	85.23	S71°00'00"W	2°42'42"	C55	112.36
C23	85.25	1310.00	85.23	S74°00'00"W	2°42'42"	C56	22.33
C24	74.05	860.00	74.01	N01°31'30"E	8°11'22"	C57	118.48
C25	74.05	860.00	74.01	N07°43'00"E	8°11'22"	C58	90.55
C26	54.68	690.00	54.68	N02°50'00"E	4°33'20"	C59	91.00
C27	95.20	630.00	95.11	N08°02'22"E	8°39'32"	C60	74.00
C28	95.20	630.00	95.11	N11°22'33"E	8°39'32"	C61	27.80
C29	95.20	630.00	95.11	N17°22'33"E	8°39'32"	C62	66.30
C30	95.20	630.00	95.11	N24°41'12"W	8°39'32"	C63	58.60
C31	95.20	630.00	95.11	N31°59'30"E	8°39'32"	C64	58.61
C32	95.20	630.00	95.11	N39°17'48"E	8°39'32"	C65	58.61
C33	95.20	630.00	95.11	N46°36'06"E	8°39'32"	C66	58.61
C34	95.20	630.00	95.11	N53°54'24"E	8°39'32"	C67	58.61
C35	95.20	630.00	95.11	N61°12'42"E	8°39'32"	C68	58.61
C36	95.20	630.00	95.11	N68°31'00"E	8°39'32"	C69	58.61
C37	95.20	630.00	95.11	N75°49'18"E	8°39'32"	C70	58.61
C38	95.20	630.00	95.11	N83°07'36"E	8°39'32"	C71	58.61
C39	95.20	630.00	95.11	N90°25'54"E	8°39'32"	C72	58.61
C40	95.20	630.00	95.11	N97°44'12"E	8°39'32"	C73	58.61
C41	95.20	630.00	95.11	S04°02'30"W	8°39'32"	C74	58.61
C42	95.20	630.00	95.11	S11°20'48"W	8°39'32"	C75	58.61
C43	95.20	630.00	95.11	S18°39'06"W	8°39'32"	C76	58.61
C44	95.20	630.00	95.11	S25°57'24"W	8°39'32"	C77	58.61
C45	95.20	630.00	95.11	S33°15'42"W	8°39'32"	C78	58.61
C46	95.20	630.00	95.11	S40°34'00"W	8°39'32"	C79	58.61
C47	95.20	630.00	95.11	S47°52'18"W	8°39'32"	C80	58.61
C48	95.20	630.00	95.11	S55°10'36"W	8°39'32"	C81	58.61
C49	95.20	630.00	95.11	S62°28'54"W	8°39'32"	C82	58.61
C50	95.20	630.00	95.11	S69°47'12"W	8°39'32"	C83	58.61
C51	95.20	630.00	95.11	S77°05'30"W	8°39'32"	C84	58.61
C52	95.20	630.00	95.11	S84°23'48"W	8°39'32"	C85	58.61
C53	95.20	630.00	95.11	S91°42'06"W	8°39'32"	C86	58.61
C54	95.20	630.00	95.11	S99°00'24"W	8°39'32"	C87	58.61
C55	95.20	630.00	95.11	S106°18'42"W	8°39'32"	C88	58.61
C56	95.20	630.00	95.11	S113°37'00"W	8°39'32"	C89	58.61
C57	95.20	630.00	95.11	S120°55'18"W	8°39'32"	C90	58.61
C58	95.20	630.00	95.11	S128°13'36"W	8°39'32"	C91	58.61
C59	95.20	630.00	95.11	S135°31'54"W	8°39'32"	C92	58.61
C60	95.20	630.00	95.11	S142°50'12"W	8°39'32"	C93	58.61
C61	95.20	630.00	95.11	S150°08'30"W	8°39'32"	C94	58.61
C62	95.20	630.00	95.11	S157°26'48"W	8°39'32"	C95	58.61
C63	95.20	630.00	95.11	S164°45'06"W	8°39'32"	C96	58.61
C64	95.20	630.00	95.11	S172°03'24"W	8°39'32"	C97	58.61
C65	95.20	630.00	95.11	S179°21'42"W	8°39'32"	C98	58.61
C66	95.20	630.00	95.11	S186°39'60"W	8°39'32"	C99	58.61
C67	95.20	630.00	95.11	S193°57'78"W	8°39'32"	C100	58.61
C68	95.20	630.00	95.11	S201°15'96"W	8°39'32"	C101	58.61
C69	95.20	630.00	95.11	S208°34'14"W	8°39'32"	C102	58.61
C70	95.20	630.00	95.11	S215°52'32"W	8°39'32"	C103	58.61
C71	95.20	630.00	95.11	S223°10'50"W	8°39'32"	C104	58.61
C72	95.20	630.00	95.11	S230°29'08"W	8°39'32"	C105	58.61
C73	95.20	630.00	95.11	S237°47'26"W	8°39'32"	C106	58.61
C74	95.20	630.00	95.11	S245°05'44"W	8°39'32"	C107	58.61
C75	95.20	630.00	95.11	S252°24'02"W	8°39'32"	C108	58.61
C76	95.20	630.00	95.11	S259°42'20"W	8°39'32"	C109	58.61
C77	95.20	630.00	95.11	S267°00'38"W	8°39'32"	C110	58.61
C78	95.20	630.00	95.11	S274°18'56"W	8°39'32"	C111	58.61
C79	95.20	630.00	95.11	S281°37'14"W	8°39'32"	C112	58.61
C80	95.20	630.00	95.11	S288°55'32"W	8°39'32"	C113	58.61
C81	95.20	630.00	95.11	S296°13'50"W	8°39'32"	C114	58.61
C82	95.20	630.00	95.11	S303°32'08"W	8°39'32"	C115	58.61
C83	95.20	630.00	95.11	S310°50'26"W	8°39'32"	C116	58.61
C84	95.20	630.00	95.11	S318°08'44"W	8°39'32"	C117	58.61
C85	95.20	630.00	95.11	S325°27'02"W	8°39'32"	C118	58.61
C86	95.20	630.00	95.11	S332°45'20"W	8°39'32"	C119	58.61
C87	95.20	630.00	95.11	S340°03'38"W	8°39'32"	C120	58.61
C88	95.20	630.00	95.11	S347°21'56"W	8°39'32"	C121	58.61
C89	95.20	630.00	95.11	S354°40'14"W	8°39'32"	C122	58.61
C90	95.20	630.00	95.11	S361°58'32"W	8°39'32"	C123	58.61
C91	95.20	630.00	95.11	S369°16'50"W	8°39'32"	C124	58.61
C92	95.20	630.00	95.11	S376°35'08"W	8°39'32"	C125	58.61
C93	95.20	630.00	95.11	S383°53'26"W	8°39'32"	C126	58.61
C94	95.20	630.00	95.11	S391°11'44"W	8°39'32"	C127	58.61
C95	95.20	630.00	95.11	S398°29'62"W	8°39'32"	C128	58.61
C96	95.20	630.00	95.11	S405°47'80"W	8°39'32"	C129	58.61
C97	95.20	630.00	95.11	S413°05'98"W	8°39'32"	C130	58.61
C98	95.20	630.00	95.11	S420°24'16"W	8°39'32"	C131	58.61
C99	95.20	630.00	95.11	S427°42'34"W	8°39'32"	C132	58.61
C100	95.20	630.00	95.11	S435°00'52"W	8°39'32"	C133	58.61
C101	95.20	630.00	95.11	S442°19'10"W	8°39'32"	C134	58.61
C102	95.20	630.00	95.11	S449°37'28"W	8°39'32"	C135	58.61
C103	95.20	630.00	95.11	S456°55'46"W	8°39'32"	C136	58.61
C104	95.20	630.00	95.11	S464°14'04"W	8°39'32"	C137	58.61
C105	95.20	630.00	95.11	S471°32'22"W	8°39'32"	C138	58.61
C106	95.20	630.00	95.11	S478°50'40"W	8°39'32"	C139	58.61
C107	95.20	630.00	95.11	S486°08'58"W	8°39'32"	C140	58.61
C108	95.20	630.00	95.11	S493°27'16"W	8°39'32"	C141	58.61
C109	95.20	630.00	95.11	S500°45'34"W	8°39'32"	C142	58.61
C110	95.20	630.00	95.11	S508°03'52"W	8°39'32"	C143	58.61
C111	95.20	630.00	95.11	S515°22'10"W	8°39'32"	C144	58.61
C112	95.20	630.00	95.11	S522°40'28"W	8°39'32"	C145	58.61
C113	95.20	630.00	95.11	S530°58'46"W	8°39'32"	C146	58.61
C114	95.20	630.00	95.11	S538°17'04"W	8°39'32"	C147	58.61
C115	95.20	630.00	95.11	S545°35'22"W	8°39'32"	C148	58.61
C116	95.20	630.00	95.11	S552°53'40"W	8°39'32"	C149	58.61
C117	95.20	630.00	95.11	S560°11'58"W	8°39'32"	C150	58.61
C118	95.20	630.00	95.11	S567°30'16"W	8°39'32"	C151	58.61
C119	95.20	630.00	95.11	S574°48'34"W	8°39'32"	C152	58.61
C120	95.20	630.00	95.11	S582°06'52"W	8°39'32"	C153	58.61
C121	95.20	630.00	95.11	S589°25'10"W	8°39'32"	C154	58.61
C122	95.20	630.00	95.11	S596°43'28"W	8°39'32"	C155	58.61
C123	95.20	630.00	95.11	S604°01'46"W			